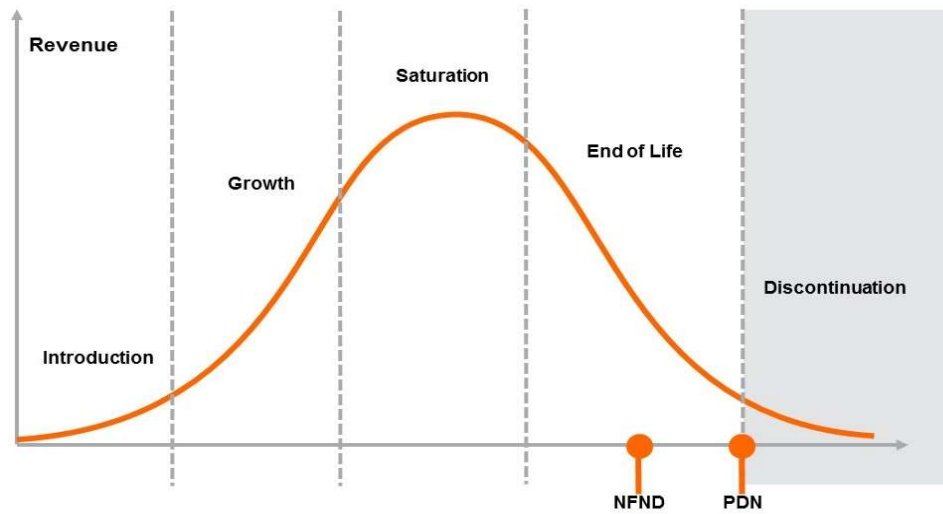


Product Or Individual Q-Code Discontinuation (acc. JEDEC J-STD-048) OS-PDN-2022-014

15 June 2022

Last order: 30 June 2023

Last delivery: 30 June 2024



Please direct your feedback to your local Sales office.

DISCONTINUED				NEW (REPLACEMENT)		
Device	Ordering Code	Brand	Reason for discontinuation	Device	Datasheet Ordering Code	Brand
LA T67D - Whole Device						
LA T67D-U2V2-24-1-20-R18-Z-KO	Q65112A6891	TOPLED	New chip generation available	KS DELPS1.22 / LA T67F.01	Q65112A4763 / in development	TOPLED
LA T67D-V1V2-34-H3Q4-20-R18-Z-HAN	Q65111A8468	TOPLED	New chip generation available	KS DELPS1.22 / LA T67F.01	Q65112A4763 / in development	TOPLED
LA T67D-V1AA-23-1-20-R18-Z-SV	Q65112A0594	TOPLED	New chip generation available	KS DELPS1.22 / LA T67F.01	Q65112A4763 / in development	TOPLED
LA T67D-V1AA-34-1-20-R18-Z-XX	Q65111A7149	TOPLED	New chip generation available	KS DELPS1.22 / LA T67F.01	Q65112A4763 / in development	TOPLED
LA T67D-V1V2-34-1-20-R18-Z-DL	Q65111A6321	TOPLED	New chip generation available	KS DELPS1.22 / LA T67F.01	Q65112A4763 / in development	TOPLED
LA T67D-V1V2-24-1-20-R18-Z-HAN	Q65111A6009	TOPLED	New chip generation available	KS DELPS1.22 / LA T67F.01	Q65112A4763 / in development	TOPLED
LA T67D-V1AA-24-1-20-R18-Z	Q65111A4880	TOPLED	New chip generation available	KS DELPS1.22 / LA T67F.01	Q65112A4763 / in development	TOPLED
LA T67D-U2V2-24-1-20-R18-Z	Q65111A4262	TOPLED	New chip generation available	KS DELPS1.22 / LA T67F.01	Q65112A4763 / in development	TOPLED
LA T67D-U2V2-34-1-20-R18-Z	Q65111A4287	TOPLED	New chip generation available	KS DELPS1.22 / LA T67F.01	Q65112A4763 / in development	TOPLED
LA T67D-U2V2-34-1-20-R18-Z-DL	Q65111A3394	TOPLED	New chip generation available	KS DELPS1.22 / LA T67F.01	Q65112A4763 / in development	TOPLED
LA T67D-U2AA-24-1-20-R18-Z	Q65110A9889	TOPLED	New chip generation available	KS DELPS1.22 / LA T67F.01	Q65112A4763 / in development	TOPLED
LS T67D - Whole Device						
LS T67D-U2V1-1-H3Q4-20-R18-XX	Q65113A2767	TOPLED	New chip generation available	KS DELPS1.22 / LS T67F.01	Q65112A4763 / in development	TOPLED
LS T67D-T2U2-1-H3Q4-20-R18-MM	Q65113A0991	TOPLED	New chip generation available	KS DELPS1.22 / LS T67F.01	Q65112A4763 / in development	TOPLED
LS T67D-T2U2-1-1-20-R18-Z-HE	Q65112A4944	TOPLED	New chip generation available	KS DELPS1.22 / LS T67F.01	Q65112A4763 / in development	TOPLED
LS T67D-T2U1-1-1-20-R18-Z-MM	Q65111A6789	TOPLED	New chip generation available	KS DELPS1.22 / LS T67F.01	Q65112A4763 / in development	TOPLED
LS T67D-T2U2-1-1-20-R18-Z-VL	Q65111A4768	TOPLED	New chip generation available	KS DELPS1.22 / LS T67F.01	Q65112A4763 / in development	TOPLED
LS T67D-U1U2-1-1-20-R18-Z-XX	Q65111A4939	TOPLED	New chip generation available	KS DELPS1.22 / LS T67F.01	Q65112A4763 / in development	TOPLED
LS T67D-T2U1-1-1-20-R18-Z-VIS	Q65111A5238	TOPLED	New chip generation available	KS DELPS1.22 / LS T67F.01	Q65112A4763 / in development	TOPLED
LS T67D-T2U2-1-1-20-R18-Z-TW	Q65111A4106	TOPLED	New chip generation available	KS DELPS1.22 / LS T67F.01	Q65112A4763 / in development	TOPLED
LS T67D-T2V1-1-1-20-R18-Z-SV	Q65111A3281	TOPLED	New chip generation available	KS DELPS1.22 / LS T67F.01	Q65112A4763 / in development	TOPLED
LS T67D-T2V1-1-1-20-R18-Z	Q65110A9896	TOPLED	New chip generation available	KS DELPS1.22 / LS T67F.01	Q65112A4763 / in development	TOPLED

DISCONTINUED				NEW (REPLACEMENT)		
Device	Ordering Code	Brand	Reason for discontinuation	Device	Datasheet Ordering Code	Brand
LY T67D - Whole Device						
LY T67D-U1V2-35-J3S5-20-S-XX	Q65113A3792	TOPLED	New chip generation available	KY DELPS1.22 / LY T67F.01	Q65112A4009 / in development	TOPLED
LY T67D-U2V2-56-1-20-R18-Z-SV	Q65112A6611	TOPLED	New chip generation available	KY DELPS1.22 / LY T67F.01	Q65112A4009 / in development	TOPLED
LY T67D-U2V2-35-1-20-R18-Z-YA	Q65112A7507	TOPLED	New chip generation available	KY DELPS1.22 / LY T67F.01	Q65112A4009 / in development	TOPLED
LY T67D-U1V1-35-1-20-R18-Z-YA	Q65112A5285	TOPLED	New chip generation available	KY DELPS1.22 / LY T67F.01	Q65112A4009 / in development	TOPLED
LY T67D-U2V1-4-1-20-R18-Z-XX	Q65112A6502	TOPLED	New chip generation available	KY DELPS1.22 / LY T67F.01	Q65112A4009 / in development	TOPLED
LY T67D-U1V1-45-J3S5-20-R18-XX	Q65113A0650	TOPLED	New chip generation available	KY DELPS1.22 / LY T67F.01	Q65112A4009 / in development	TOPLED
LY T67D-U2V2-34-1-20-R18-VIS	Q65112A9245	TOPLED	New chip generation available	KY DELPS1.22 / LY T67F.01	Q65112A4009 / in development	TOPLED
LY T67D-U2V1-45-1-20-R18-Z-XX	Q65112A8569	TOPLED	New chip generation available	KY DELPS1.22 / LY T67F.01	Q65112A4009 / in development	TOPLED
LY T67D-U2V2-5-J3S5-20-R18-MM	Q65113A1037	TOPLED	New chip generation available	KY DELPS1.22 / LY T67F.01	Q65112A4009 / in development	TOPLED
LY T67D-V1V2-45-1-20-R18-XX	Q65112A1196	TOPLED	New chip generation available	KY DELPS1.22 / LY T67F.01	Q65112A4009 / in development	TOPLED
LY T67D-V1V2-45-1-20-R18-Z-DL	Q65111A7535	TOPLED	New chip generation available	KY DELPS1.22 / LY T67F.01	Q65112A4009 / in development	TOPLED
LY T67D-U2V2-35-1-20-R18-Z-VIS	Q65111A9229	TOPLED	New chip generation available	KY DELPS1.22 / LY T67F.01	Q65112A4009 / in development	TOPLED
LY T67D-U1V2-4-1-20-R18-Z-VIS	Q65112A3544	TOPLED	New chip generation available	KY DELPS1.22 / LY T67F.01	Q65112A4009 / in development	TOPLED
LY T67D-U1V2-4-1-20-R18-Z-SV	Q65112A1755	TOPLED	New chip generation available	KY DELPS1.22 / LY T67F.01	Q65112A4009 / in development	TOPLED
LY T67D-U1U2-36-1-20-R18-Z-MM	Q65111A6790	TOPLED	New chip generation available	KY DELPS1.22 / LY T67F.01	Q65112A4009 / in development	TOPLED
LY T67D-U2V2-45-1-20-R18-Z	Q65111A5032	TOPLED	New chip generation available	KY DELPS1.22 / LY T67F.01	Q65112A4009 / in development	TOPLED
LY T67D-V1V2-45-1-20-R18-Z-JC	Q65111A5107	TOPLED	New chip generation available	KY DELPS1.22 / LY T67F.01	Q65112A4009 / in development	TOPLED
LY T67D-U2V2-34-1-20-R18-Z-XX	Q65111A5387	TOPLED	New chip generation available	KY DELPS1.22 / LY T67F.01	Q65112A4009 / in development	TOPLED
LY T67D-U2V2-56-1-20-R18-Z	Q65111A4220	TOPLED	New chip generation available	KY DELPS1.22 / LY T67F.01	Q65112A4009 / in development	TOPLED
LY T67D-U2V2-45-1-20-R18-Z-DL	Q65111A3511	TOPLED	New chip generation available	KY DELPS1.22 / LY T67F.01	Q65112A4009 / in development	TOPLED
LY T67D-U1V2-34-1-20-R18-Z-SV	Q65111A2321	TOPLED	New chip generation available	KY DELPS1.22 / LY T67F.01	Q65112A4009 / in development	TOPLED
LY T67D-U1V2-36-1-20-R18-Z	Q65110A9898	TOPLED	New chip generation available	KY DELPS1.22 / LY T67F.01	Q65112A4009 / in development	TOPLED

DISCONTINUED				NEW (REPLACEMENT)		
Device	Ordering Code	Brand	Reason for discontinuation	Device	Datasheet Ordering Code	Brand
LO A67F - Whole Device						
LO A67F-ABCA-34-E3P3-30-R33-B	Q65113A3343	SIDELED	No sufficient future volume forecast	no replacement		
LO A67F-ABCA-24-E3P3-30-R33-Z	Q65112A9514	SIDELED	No sufficient future volume forecast	no replacement		
LO A67F-ABBB-24-1-30-R33-Z	Q65111A4676	SIDELED	No sufficient future volume forecast	no replacement		
LO A67F-ABBB-3-1-30-R33-Z-DL	Q65111A2368	SIDELED	No sufficient future volume forecast	no replacement		
LO A67F-ABBB-34-1-30-R33-Z-SV	Q65111A2916	SIDELED	No sufficient future volume forecast	no replacement		
LO A67F-AABA-23-1-30-R33-Z	Q65111A1628	SIDELED	No sufficient future volume forecast	no replacement		
LO A67F-AABA-23-1-30-R33-Z-VIS	Q65111A0089	SIDELED	No sufficient future volume forecast	no replacement		
LO A67F-AABA-3-1-30-R33-Z-DL	Q65111A0368	SIDELED	No sufficient future volume forecast	no replacement		
LO A67F-V2BA-34-1-30-R33-Z-HE	Q65110A5364	SIDELED	No sufficient future volume forecast	no replacement		
LO A67F-V2BB-24-1-30-R33-Z	Q65110A4867	SIDELED	No sufficient future volume forecast	no replacement		

Sensing is life

amul OSRAM

Changes in automotive low/mid power portfolio

Customer Info Package for:
OS-PDN-2022-14
Status: June 2022

OS AM INT

Introduction of 6“ InGaAIP Thinfilm Chip and portfolio clearance

Motivation and Impact

Motivation

- Reduce complexity in value chain
- Streamline the product portfolio
- Focus on high volume devices with latest InGaAIP Thinfilm chip technology
- Not for new design - OS-NFND-2021-019 – published by ams-OSRAM
- Short term discontinuations

Affected Devices:

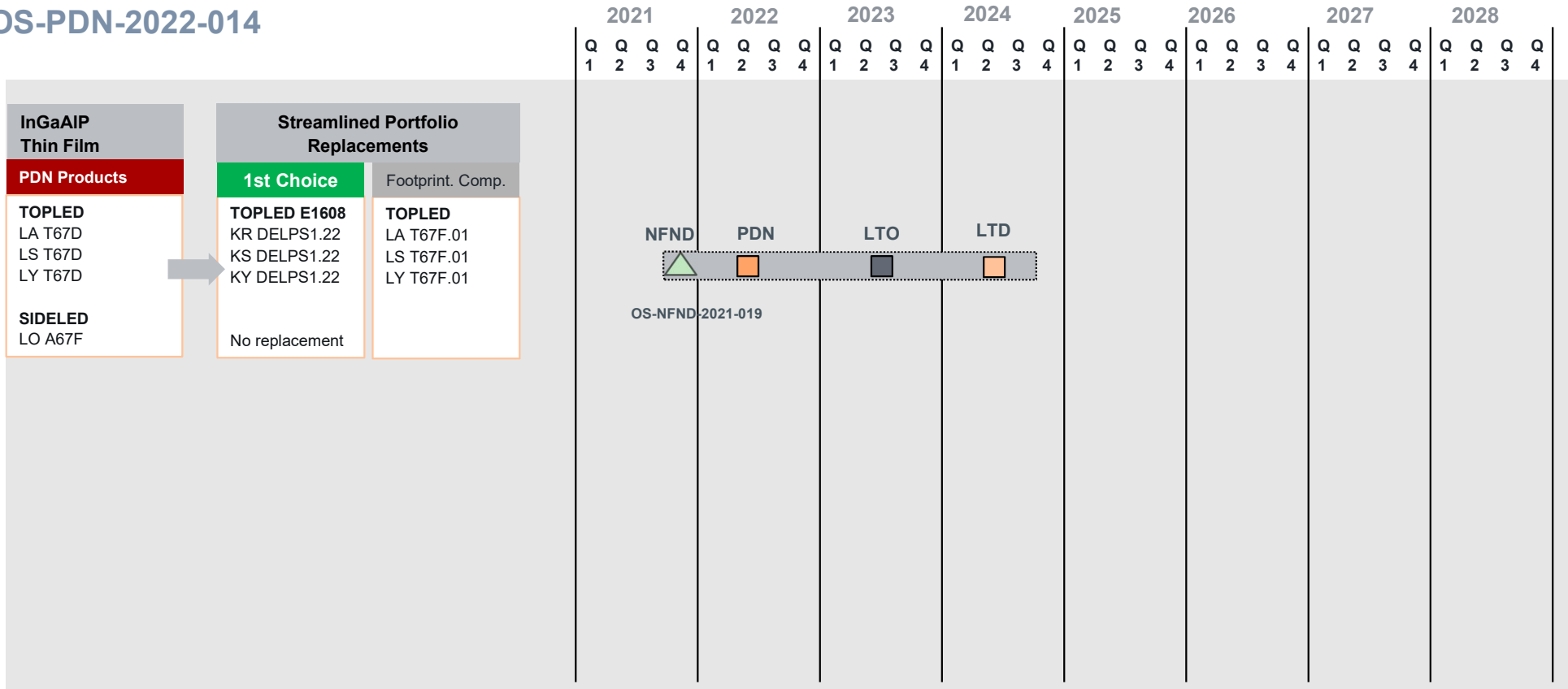
TOPLED	SIDELED
LA T67D	LO A67F
LS T67D	
LY T67D	

InGaAlP LED portfolio update: Introduction of 6” technology

Timeline TopLED/SIDELED ThinFilm – Portfolio Clearance

△ NFND □ PDN ■ LTO □ LTD

OS-PDN-2022-014



Sensing is life

amr OSRAM

Thank you

For internal use